

Safe Schools Plan

The school year is set to start September 8 to ensure time for additional training for school staff and time to safely prepare for the safe return of in-classroom learning.

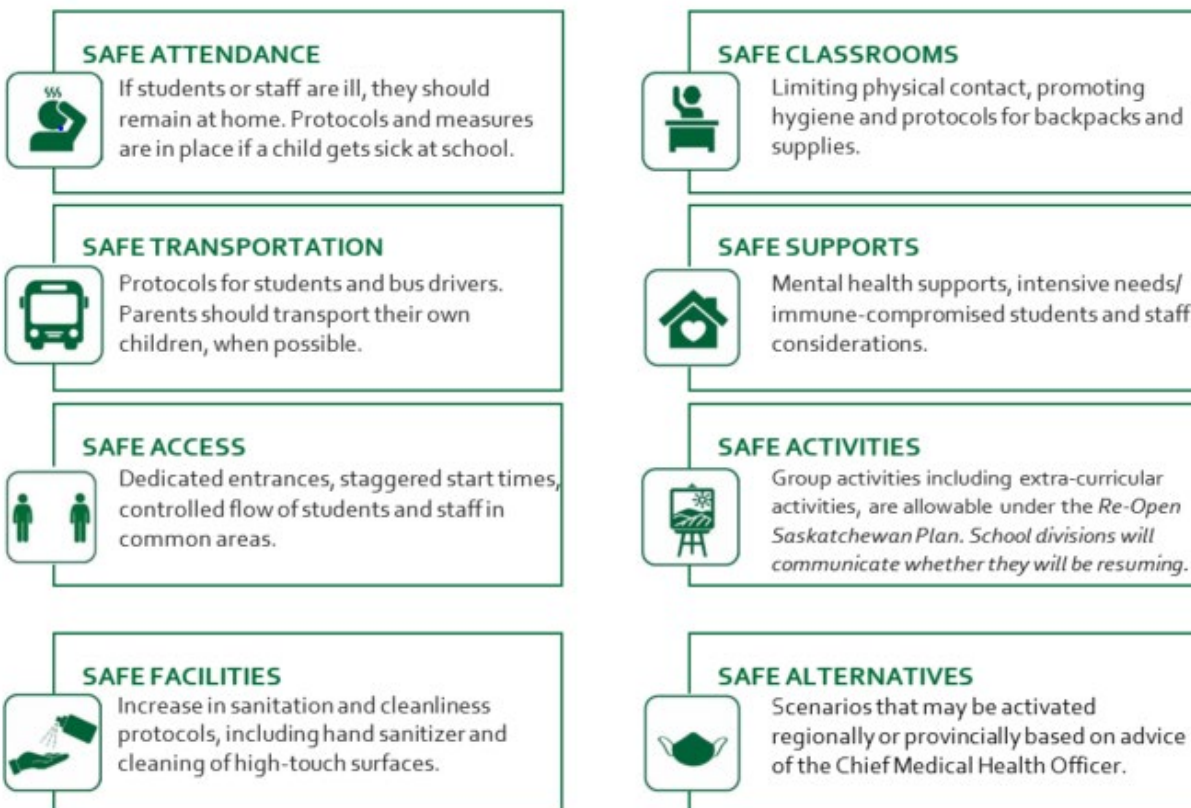
What's the Safe Schools Plan?

The **Safe Schools Plan** was created to assist school divisions, qualified independent schools, historical high schools and associate schools in developing their own localised plans for school divisions and schools.

The **Safe Schools Plan** is not the individualized plan for all school divisions and schools. These plans have been developed by your school division. As work continues to welcome students and staff back into classrooms, parents and caregivers will have access to detailed information for your child's local school. Local plans may be updated or refined as students and staff return to school.

To access local plans, please visit your school division's website for individual school information. Links are available here: <https://www.saskatchewan.ca/residents/education-and-learning/prek-12-education-early-learning-and-schools/k-12-school-divisions-in-saskatchewan>.

The **Safe Schools Plan** focuses on eight components which were incorporated into local plans to ensure the safety of our children and school staff. The eight components include:



Tips for Parents and Caregivers to Help Prepare Their Children to Return to the Classroom



Review how and when kids should wash their hands



Provide hand sanitizer for times when soap and water aren't available



Demonstrating physical distancing (and giving kids a reference of what 2 metres is)



Practicing putting on, wearing, and removing non-medical masks



Modelling these behaviours for their kids inside and outside of the home.

COVID-19: Children and Masks

Wearing a non-medical cloth mask can help reduce the spread of COVID-19, but some children might be scared. Parents and caregivers can help by explaining that a mask can help reduce the spread of germs and by showing children how to properly use a mask.



Wash Your Hands!

Wash with soap and water or use hand sanitizer before putting the mask on, as well as before and after removing the mask.



Use the Loops!

Use the ear loops or ties to put on and remove the mask.
Don't touch the front of the mask.



Cover Your Nose and Chin!

The mask should cover your nose and chin.
Do not take it off to talk to someone.



Wash Your Mask!

Non-medical cloth masks should be washed after every use. A new mask should be used if the mask becomes soiled or wet.

Masks should not be worn by children under the age of 2 or those who cannot remove a mask without help. For these children, emphasize the importance of frequent handwashing and proper coughing or sneezing etiquette.

Information for Parents: COVID-19 Testing Options and Processes

August 2020

Universal Testing

COVID-19 testing is now available to anyone who requests it, regardless of whether they have symptoms or not. A referral for testing can be made by contacting HealthLine 811 or your family physician.

Priority Testing

Teachers and school staff now have priority access to testing, before and during the school year. Teachers and school staff wishing to be tested in advance of the start of the school year are encouraged to call 811 for a referral for testing as soon as possible.

Drive-Through Testing Sites

Drive-through testing sites will be opening soon in Saskatoon and Regina. These sites will be available to anyone in the province. Individuals wishing to use these sites will not require a referral, only a valid health card. The location and opening dates of these sites will be announced in the coming days.

School Immunizations

Work is underway to align voluntary COVID-19 testing with routine school immunizations for students in grade six and grade eight. Information on the expansion of the school immunization program will be provided to parents and caregivers once details are finalized.

Testing in Schools

Throughout the school year, voluntary testing will be made available with parental consent.

Parents and caregivers will be notified at least one week prior to scheduled voluntary testing in their area. Consent forms will be sent to parents and caregivers at that time.

Areas where voluntary testing will be made available will be based on a number of criteria including; communities that have a higher student population and communities experiencing a surge in infection rates. Schools in these types of communities would be prioritized for testing.

Information for Parents: COVID-19 Notification and Illness in School

August 2020

Students should never go to school if they are sick or if anyone living in the home has tested positive for COVID-19. Everyone in the home must self-isolate for 14 days from the date of last exposure if anyone tests positive.

Parents will be advised if a COVID-19 related risk is identified to the health and safety of students, staff or the local school community. Timely updates will be provided to parents and teachers about any new developments.

If a student, teacher or staff member displays COVID-19 symptoms while at school:

- They will be asked to wear a non-medical mask and self-isolate in a separate room until they are able to go home. A parent/guardian will be notified that their child is ill.
- A COVID-19 test is recommended. Call HealthLine 811 or your family doctor to arrange testing. If you are located in Regina or Saskatoon, consider visiting a drive-through testing site, where no appointment is required.
- Public health will provide further guidance about when it's possible to return to school.
- All school areas used by the individual will be identified and immediately cleaned and disinfected.

If a positive test result is received by a student or teacher:

- If a child, teacher or staff members tests positive for COVID-19, public health will provide assistance and begin the contact tracing process immediately. This process is followed in all identified COVID-19 positive cases and provides guidance on monitoring and isolation to all close contacts. Anyone living in the same home would be considered a close contact. The investigation will identify anyone else who may have been a close contact.
- Teachers, staff and parents/caregivers of students who are considered to be close contacts of a person with COVID-19 will be contacted directly by public health via the contact tracing process.
- All teachers, staff and parents/caregivers of students in the same classroom (cohort) of a person with COVID-19 will be contacted directly by public health and by their school via email. This notification will occur separate from the contact tracing process.
- Those teachers, staff and parents/caregivers of students in the same cohort who are considered to be non-close contacts will be advised to self-monitor for symptoms and be offered priority testing options.
- Public Health will then advise on further actions that may be required, and it is important to note this could vary based on the circumstances of the positively identified case. A positive case in the cohort (classroom) may not present a high risk to the entire cohort.

- Further steps could include requirements for the cohort (classroom) to self-isolate at home and public health will advise in each situation.
- Those teachers, staff and parents/caregivers of students in the school population, outside of the same cohort, can also seek public health advice regarding self-monitoring for symptoms, transmission risk and access to priority testing options at any time.

Information for Parents and Schools: Thresholds for Changes to In-Classroom Learning

August 2020

The following case definitions will be used by Saskatchewan public health officials when assessing COVID-19 cases in school settings starting in the fall of 2020. It is a cautious approach as we enter a school year during a pandemic – circumstances that are new to every jurisdiction.

This approach will be assessed throughout the school year based on transmission trends and risk, and health system and education system capacity. Public health surveillance will guide this policy to ensure that Saskatchewan balances the need for school-setting based education while mitigating COVID-19 transmission for students, their families, teachers and staff as real time information becomes available.

Single Positive COVID-19 Result

- If a student or teacher receives a positive COVID-19 test result, public health immediately begins their contact investigation. Notification processes will proceed as outlined in "Information for Parents: COVID-19 Notification and Illness in School."

Outbreak Declaration

- If two individuals within a school test positive for COVID-19, an outbreak is declared for that school.
- The declaration of an outbreak does not automatically result in school closure. Like outbreaks in acute care, long-term care, or business settings, an outbreak declaration may be triggered by a low number of cases but is used by public health to mobilize and coordinate a response to the infection.
- With the declaration of an outbreak, all parents of that school will receive notification and the declaration will be posted to Saskatchewan.ca.

Threshold for Changes to In-Classroom Delivery

- If the contact investigation determines there have been close contacts in the classroom setting, parents of children in that classroom will be notified.
- If there is a second positive case confirmed in that classroom, the class will receive alternate instruction (non-classroom) arrangements for 14 days and public health will guide the school on specific actions to ensure the classroom setting is safe for return.

Threshold for Changes to School-Wide Delivery

- Schools or a section of schools will receive alternate instruction (non-classroom) arrangements when:
 - There are two or more positive COVID-19 cases in more than one classroom, and there are regularly shared common areas and amenities (entrances, washrooms, buses); and
 - Public health cannot establish transmission links between those cases through the contact tracing investigation.

- In some instances, the above may only be applicable to a “wing” of a school where cohorts of classes are sharing common facilities. If this characterizes an entire school, the school will be moved to alternative learning opportunities.
- Local medical health officers will also take specific school settings into consideration when designating a school to this type of approach, including: class/school layout and operations, vulnerable populations in that school or community, transmission risk in the community, etc.
- Public health may also designate a school to this type of approach when there is high risk in the community based on community transmission.
- Public health will guide the school on the specific actions to ensure the classroom setting is safe for return (cleaning, amended classroom layout).